



The George and Dragon

This access statement does not contain personal opinions as to our suitability for those with access needs, but aims to accurately describe the facilities and services that we offer all our guests/visitors.

Access Statement for The George and Dragon

Introduction

The George and Dragon inhabits a beautiful building set on the banks of the River Stour in picturesque Fordwich, just four miles from Canterbury. Fordwich, the smallest town in Britain, just oozes history, and the pub has been at the centre of community life for centuries. We serve good quality food all day, or you can just come and enjoy a cask ale or relaxing drink. Our main car park is directly opposite the pub, but we have wheelchair accessible spaces next to the pub with direct access in to the restaurant area. We have a level bar area with a wheelchair accessible toilet for our customers.

We look forward to welcoming you. If you have any queries or require any assistance please phone 01227 710661 or email george.and.dragon@homecountiespubs.co.uk.

Pre-Arrival

- For full details and maps of how to reach us please see the directions section on our website. Alternatively, you can plan your journey by car or public transport using a journey planning website; simply enter your postcode and ours which is CT2 0DB to get directions.
- The nearest railway station is Canterbury which is 4,2 miles away. Taxis are available at the station. If you require an accessible taxi we can arrange this for you please just let us know your arrival time and we can arrange pick up for you.
- There is a main road that comes right across the pub and due to the single file bridge that is over the River there is no pavement. The pavement starts 100 yards to the right of the car park. This takes you to Fordwich centre where the nearest bus

stop is located. If you are coming via the bus please come to the garden entrance to the side of the pub where our accessible entrance is located.

Car Parking and Arrival

- The car parking is located opposite the pub and is free of charge to all patrons and it accommodates 40 cars. To the side of the pub near the beer garden we have 2 clearly marked Blue Badge parking spaces, which will enable full access into the garden and in to the restaurant and bar area of the pub.
- The Blue badge spaces are of a tarmac surface but the main car park opposite is that of a gravel surface.
- The pub and the car park is well lit at night.
- The front door has a step and a narrow entrance so wheelchair access is gained to the side of the pub on a tarmac surface that enables you to enter the pub and the garden.



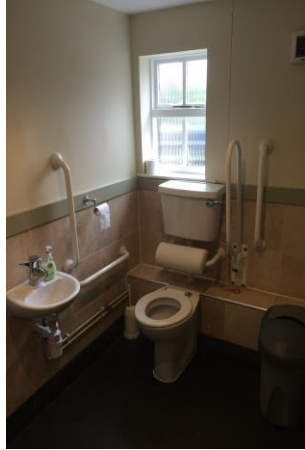
Bar & Bar Area and Dining Area/Restaurant

- The restaurant area and front bar area is all located on the ground floor. The main toilets and snug bar area is entered into with one stone step.
- The wheelchair accessible toilet is located in the main restaurant area and is all on one level. This is also located to

- the side entrance which takes you out to the blue badge car parking and in to our beer garden and river views.
- We offer full table service in all areas of the pub for both drinks and food service.
 - All our furniture is classic wooden chairs and tables with padded seating. We do have a few wooden bar stools directly around the bar but all our tables are well spaced with a clear height from the floor of 609mm/24ins.
 - Lighting is natural daylight with supplemented overhead lighting, candles and wall lighting.
 - The floor is carpeted in the main restaurant area, then wooden in the bar and sung areas.
 - We have 2 open fireplaces which are lit for approx 9 months of the year.
 - We have a full Allergen menu to help cater for as many people as we can. We are happy to help and both our main menu and allergen menus are updated daily on our website.

Customer Toilets

- Customer toilets are located to the back of the pub in the sung area which are accessible via one step. Our wheelchair accessible toilet is accessed through the main restaurant to the side of the pub.
- There is a vertical alarm pull cord.
- Non slip laminate floor
- When the alarm is activated it will activate a sound beacon and flashing light.
- The sink is low level and is has a lever tap.
- The lighting is very bright fluorescent lighting.
- Toilet height is 400mm/15.7ins



Beer Garden/Outdoor Area/Smoking area

- The beer garden is open all year round and we use it for beer festivals, duck races and BBQ events. We have a 1930's tractor for children to play on and we have a fully serviced terrace area with large umbrellas.

Contact Information

Address (Inc postcode): The George and Dragon, King Street, Fordwich, Catherbury, Kent, CT2 0DB

Telephone: 01227 710661

Email: george.and.dragon@homecountiespubs.co.uk

Website: www.homecountiespubs/georgeanddragon

Hours Of Operation: Mon - Sunday Midday - 11pm

Local Accessible Taxi: Andy Cabs; 01227 767111 Galaxy Taxis: 01227 450150 Premier cards; 01227 710310

Local Public Transport: Good bus link from Canterbury bus station. The bus route is 6A and takes 17 minuets from Canturbury bus station to the bus stop in

Fordwich. They leave every 7 minuets
Monday - Saturday